

Schaffner Automotive Solutions

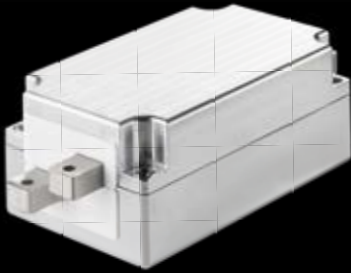
EMI filters, magnetic components, keyless entry systems

Schaffner solutions for e-mobility can be found in automotive electronic systems, battery packs and EV powertrains: EMI filters, common mode chokes and power inductors.

LFA and immobilizer antennas round off our product portfolio for safety and convenience in automotive applications.

HV-DC Filters

Reduce EMI and meet the stringent automotive standards



HV-DC filters provide EMI suppression along the DC Powertrain of the EV.

The compact and modular design allows size, weight and cost reduction opportunities.

Features

- | Maximum operation voltage: 600 V_{DC}
- | Rated current: 150 A, 250 A, 500 A
- | High attenuation for common and differential mode between 10 kHz up to 300 MHz
- | Temperature range: -40°C to +110°C
- | Dimensions: 120 × 95 × 56 mm (150 A, 250 A), 146 × 90 × 60 mm (500 A)
- | Weight: 750 g (150 A, 250 A), 1140 g (500 A)
- | Customization to customer's design is available upon request

Active EMI-Filter

A new technology for EMI suppression. High performance and small volume



Features

- | Rated Voltage: 630 V_{DC}
- | Rated Current: from 35 A @ 85°C up to 200 A @ 85°C
- | Attenuation from 30 to 40 dB from 10 kHz up to 100 MHz
- | Power supply: 12 V_{DC}

High Current Common Mode Chokes

High Current capabilities



Schaffner provides high current common mode chokes with high performance, compact size and good thermal behavior. Designed for EMI filtering along the EV's powertrain.

Features

- | Inductance range: 3 mH–0.5 mH
- | Maximum operation voltage: 600 V_{DC}
- | Current range: 80 A–400 A
- | Temperature operation: -40°C to +150°C
- | Compact design
- | Customization to customer's design is available upon request



Compact Common Mode Chokes

6 A–50 A

Small size and excellent attenuation



Schaffner provides vertical common mode chokes for automotive application with rated current from 6 A to 50 A and good thermal behavior. The PCB mounting design allows easy integration in customer systems.

Features

- | Inductance range: 17 mH–0.5 mH
- | Maximum operation voltage: 600 V_{DC}
- | Current range: 6 A–50 A
- | Temperature operation: –40 °C to +125 °C
- | Multiple PCB mounting options
- | Compact design
- | Customization to customer's design is available upon request

Inductors

Innovative winding design with carefully selected core materials



Schaffner provides inductors for automotive DC-DC converters for various range of power. The innovative winding design allows maximal power density, low losses and robust mechanical design.

Features

- | Inductance range: 10 uH–1.5 mH
- | Current range: 5 A–300 A
- | Switching frequency: 5 kHz–200 kHz
- | Temperature operation: –40 °C to +180 °C
- | Low power losses
- | High temperature stability
- | Low level of audible noise
- | Mechanical robustness
- | Customization to customer's design is available upon request

LFA Antennas

Long range and compact design



LFA antenna, is placed in door handle or inside a car. Schaffner keyless antennas provide a long range of operation, compact design and best quality.

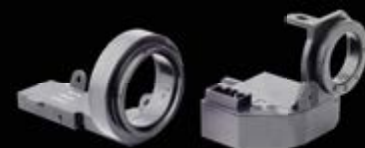
The main function of Schaffner's keyless antennas is to create a low frequency magnetic field that allows to detect and wake-up the key Fob. Schaffner antennas can be offered with door handle switch and door handle LED light.

Capabilities

- | Resonance frequency of antenna: 20 kHz, 125 kHz, 134.5 kHz
- | Inductance range: 160 uH–850 uH
- | Magnetic Field strength: up to 95 dBuA/m
- | Maximum current: 4 A
- | Temperature range: –40 °C to +85 °C
- | Mechanical robustness
- | Over molded
- | Customization to customer's design is available upon request

Immobilizer Antennas

Prevent an unwanted startup of a car



Immobilizer antennas, also called keylock cylinder antennas, are placed in the ignition switch lock cylinder, inside a car. The system with an immobilizer antenna aims to prevent an unwanted startup of a car.

The immobilizer antenna emit a low frequency magnetic field that allows to wake up and identify the key fob.

Capabilities

- | Resonance frequency of antenna: 125 kHz, 134.5 kHz
- | Inductance range: 300 uH–1 mH
- | Maximum current: 1 A
- | Mechanical robustness
- | Over molded with IP 67 classifications
- | Customization to customer's design is available upon request





Switzerland Schaffner Group

Competence Center

Nordstrasse 11
4542 Luterbach
P +41 32 681 67 23
P +41 32 681 66 26
F +41 32 681 66 30
info@schaffner.com
www.schaffner.com

China

Schaffner EMC Ltd. Shanghai

T20-3, No 565 Chuangye Road
Pudong New Area
201201 Shanghai
P +86 21 3813 9500/2401
F +86 21 3813 9501/02
www.schaffner.com.cn

USA

Schaffner EMC Inc.

52 Mayfield Avenue
08837 Edison, New Jersey
P +1 732 225 9533
P +1 248 231 0776
F +1 732 225 4789
www.schaffner.usa.com

France

Schaffner EMC S.A.S.

16-20 Rue Louis Rameau
95875 Bezons
P +33 1 34 34 3063
P +33 1 34 34 3060
F +33 1 39 47 0228
www.schaffner.com

Germany

Schaffner Deutschland GmbH

Schoemperlenstrasse 12B
76185 Karlsruhe
P +49 721 569132
P +49 721 56910
F +49 721 569110
www.schaffner.com

To find your local partner within Schaffner's global network, please go to www.schaffner.com

© 2018 Schaffner Group

The content of this document has been carefully checked and understood. However, neither Schaffner nor its subsidiaries assume any liability whatsoever for any errors or inaccuracies of this document and the consequences thereof. Published specifications are subject to change without notice. Product suitability for any area of application must ultimately be determined by the customer. In all cases, products must never be operated outside their published specifications. Schaffner does not guarantee the availability of all published products. This disclaimer shall be governed by substantive Swiss law and resulting disputes shall be settled by the courts at the place of business of Schaffner Holding AG. Latest publications and a complete disclaimer can be downloaded from the Schaffner website. All trademarks recognized.

